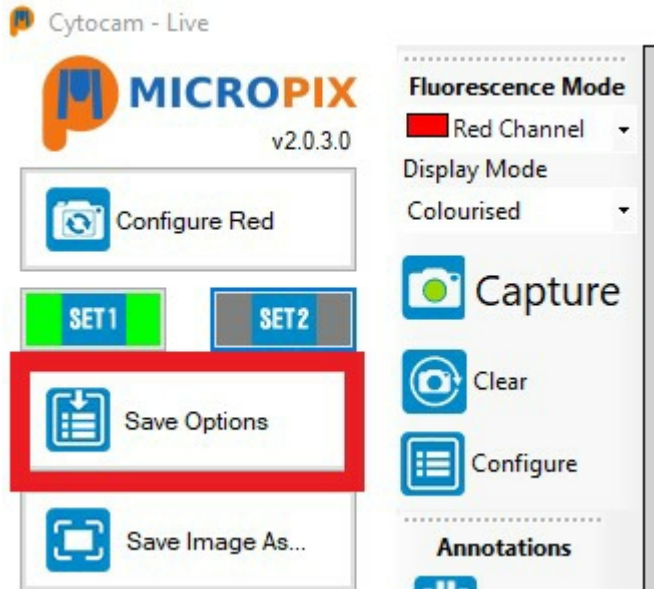


## Cytocam Fluorescence Module - Quick Start Guide

If you have the ANNOTATION MODULE set the correct objective before capturing an image.

If capturing a SINGLE CHANNEL simply use the Save Image As... capture button (set JPEG or TIFF in the Save Options first).



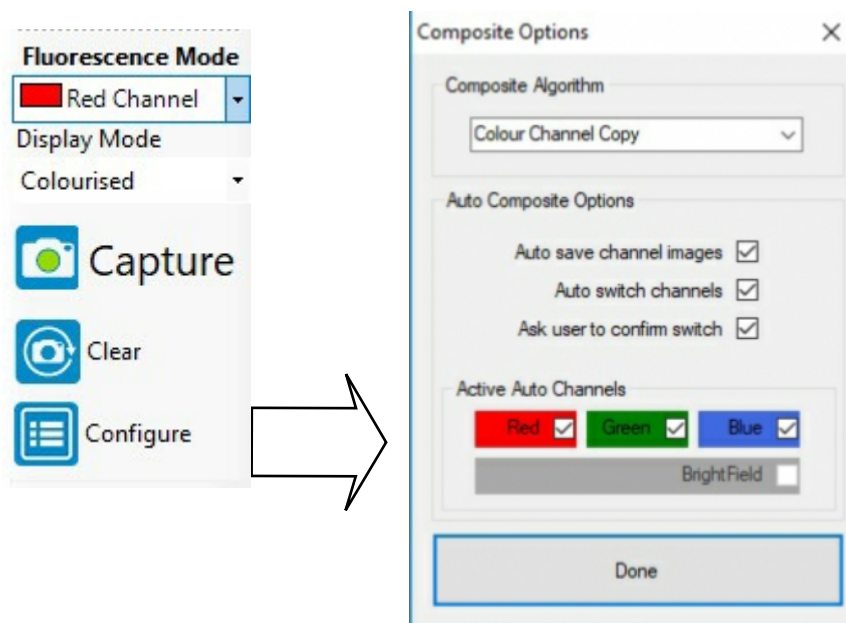
For MULTI-CHANNEL FLUORESCENCE:

Click "Save options" and set your:

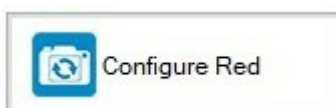
Image output folder

Image name

JPEG or TIFF



In Fluorescence mode (make sure a channel is selected), press CONFIGURE to set your options - Colour Channel Copy for normal fluorescence and your Red / Green / Blue channels.



Set-up your camera parameters for each channel (frame rate, exposure, gain, gamma etc).

When ready, go back to the Red Channel and Press CAPTURE. The software captures images in the order RED then GREEN then BLUE.

A composite image will be displayed.

Press CLEAR to go back to a live image.