

## Cytocam - GigE Camera Installation

Our GigE cameras require a dedicated GigE network port. It must have an Intel chipset - we recommend an Intel Pro 1000 CT PCI network card and supply one free of charge with the camera.

If you are using your own network port it must support GigE (1000) and Jumbo frames. To set Jumbo frames go to:

Device Manager > Network Adapters> GigE port  
Right click and select "Properties" > Advanced  
Under "Jumbo Frame / Jumbo Packet" set to 9KB MTU.  
Click OK

1. Download and save the following files from [www.micropix.co.uk/downloads](http://www.micropix.co.uk/downloads)



Cytocam\_1v35.zip

GigE Filter Installer

2. Unzip and run the GigE Filter Installer.

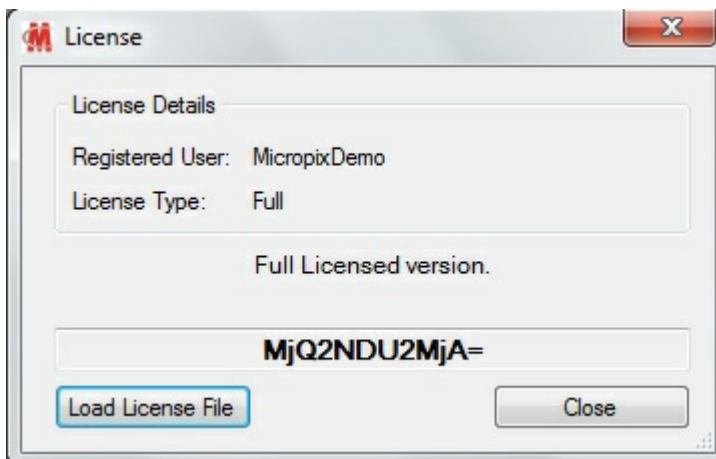
 GigE Filter Installer 1.20	29/09/2010 15:10	Application	358 KB
--	------------------	-------------	--------

Unzip and run (right click and run as administrator) Cytocam setup:

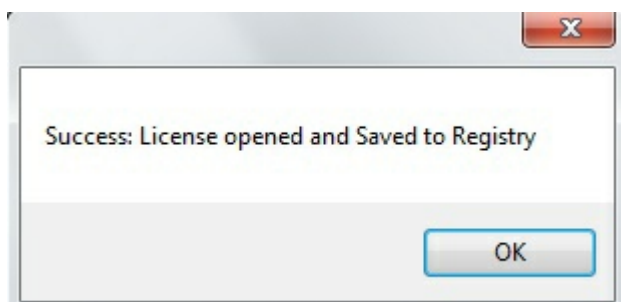
 CytocamInstaller32	27/04/2015 16:50	Windows Installer ...	8,046 KB
 setup	27/04/2015 16:50	Application	419 KB

3. **Restart your PC / laptop to complete the installation.**
4. Plug in your camera and wait a few seconds for the drivers to load.
5. Start Cytocam.

You will be prompted to load a license file (if not, click on the Micropix logo in the top left of the screen).



1. Click load license file.
2. Navigate to your license file (it is supplied on a memory stick with your camera). Please email us the Code if you misplace your license file.
3. Click OK.
4. You should get a success pop-up:
5. Click OK



- 6 Installation is complete.