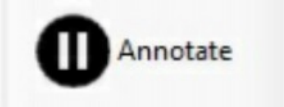
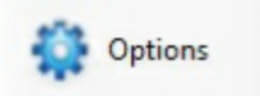
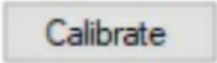
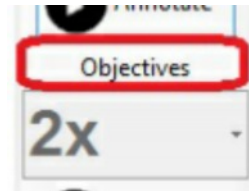
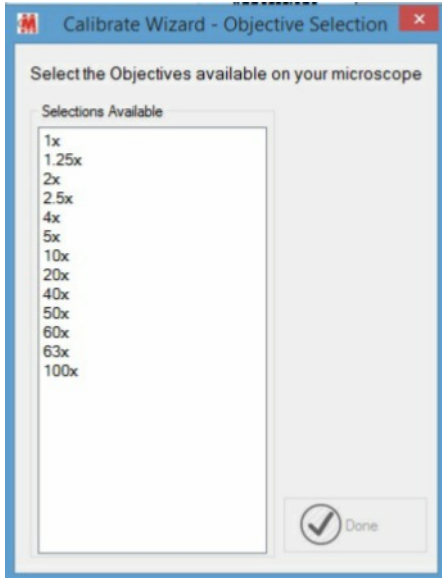


**1. AUTO CALIBRATION:**

- Using the calibration slide supplied with the software focus on the 0.15mm (150um) dot on your 10x objective (ensuring you are in "LIVE" camera mode).

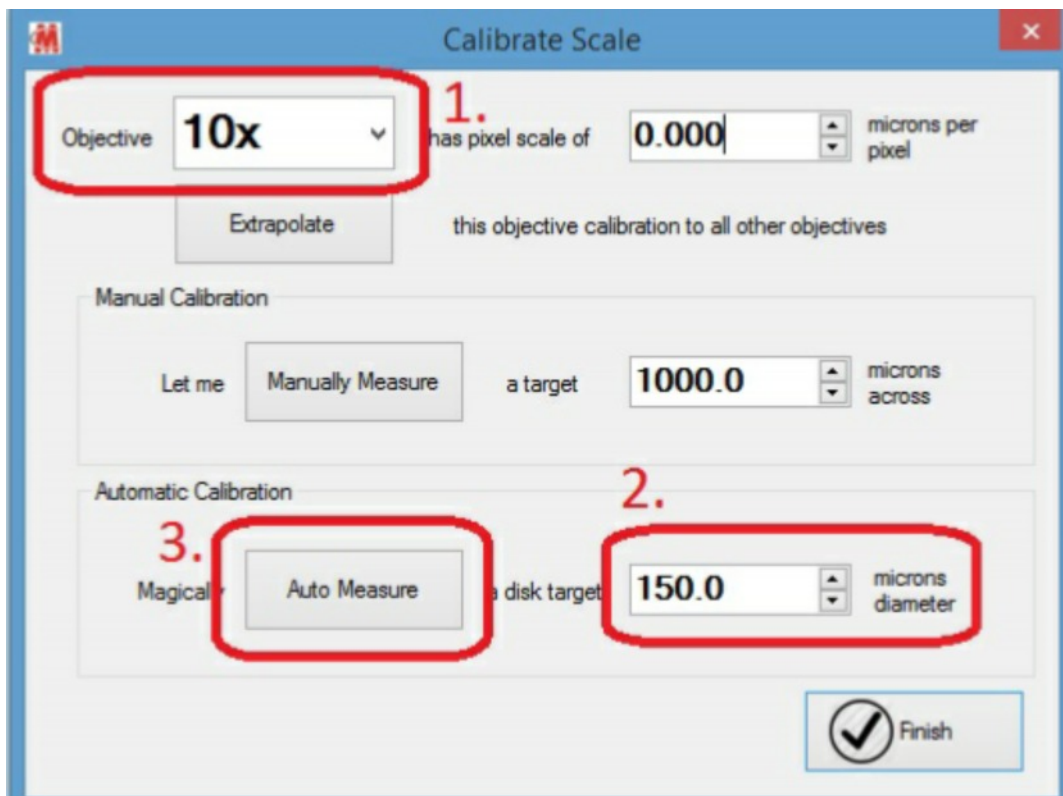
● Press:  then  Select the Scale Bar tab, then press 

- On first use you will be asked to type in the magnifications that are on your microscope. If you ever add or remove objectives in the future these can be changed by pressing the OBJECTIVES button :

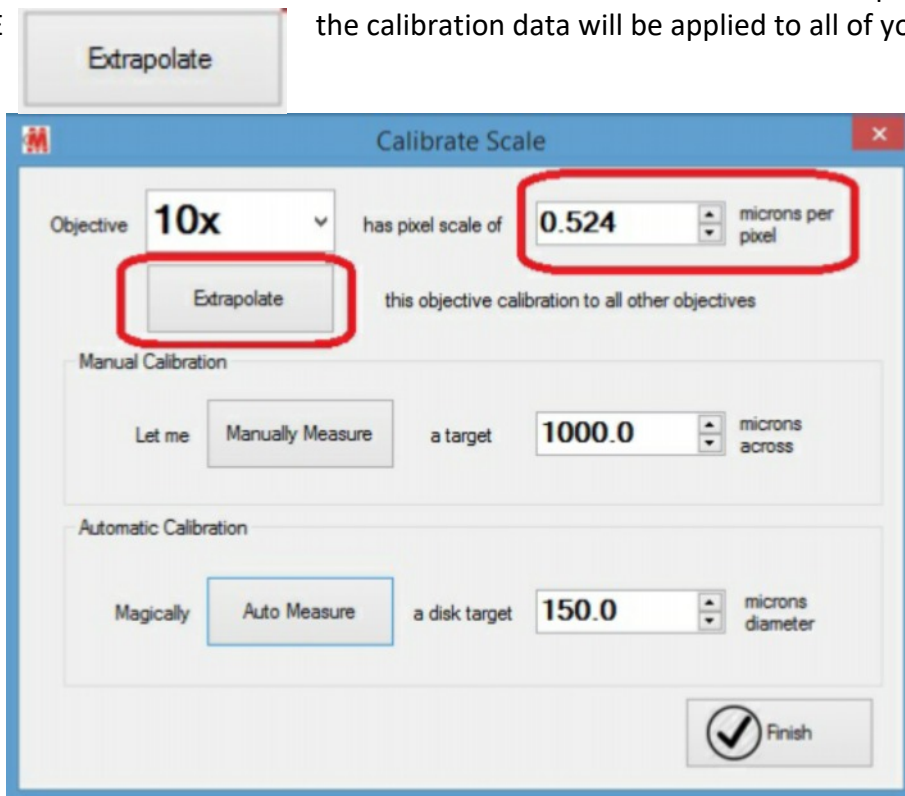


- Next you can choose if you want to manually or automatically calibrate your image. To automatically calibrate:

1. Select the objective (10x).
2. Type in the diameter of the dot (150um).
3. Press AUTO MEASURE.

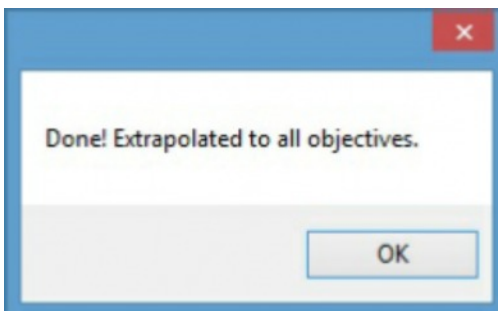


The software then draws a circle around the dot and calculates the number of microns per pixel. If you then press EXTRAPOLATE the calibration data will be applied to all of your microscope objectives.



Click OK then FINISH. Close Cytocam to save the calibration data.

1.

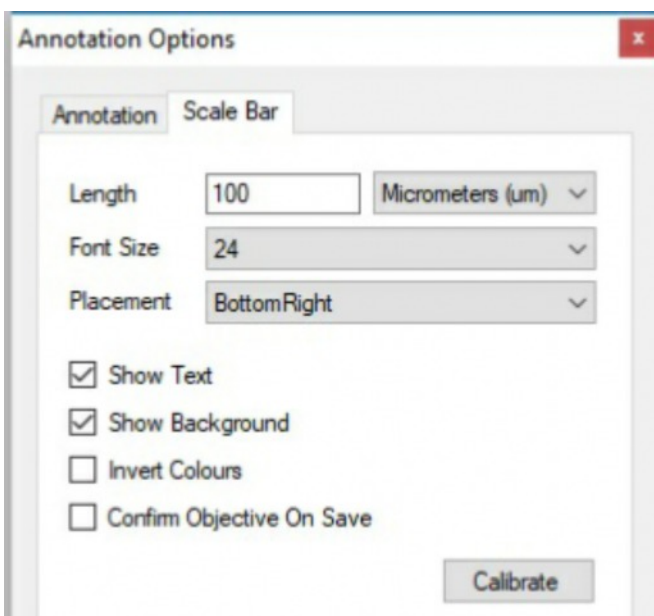


2.



3. **Close Cytocam to save.**

2.



Once calibrated you can set the scale bar options for each objective (press ANNOTATE, select the OBJECTIVE, press OPTIONS, select the Scale Bar tab - (repeat for each objective) so that when you press



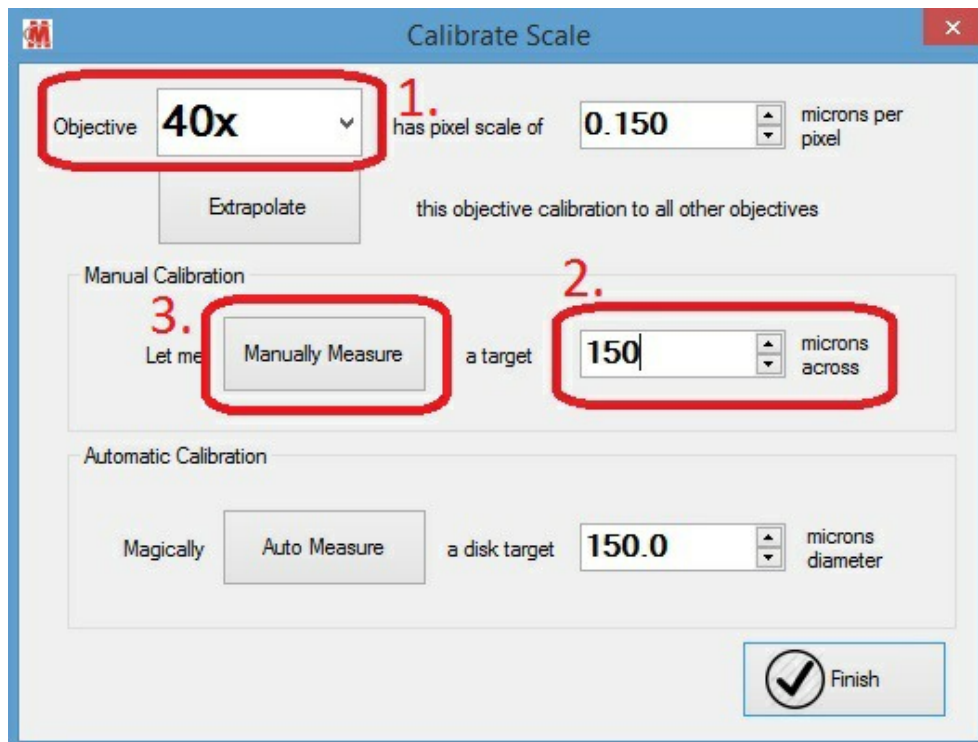
a scale bar is automatically placed according to your scale bar options (length, units, placement, font size, with / without background, black / white or white / black).

## 2. MANUAL CALIBRATION:

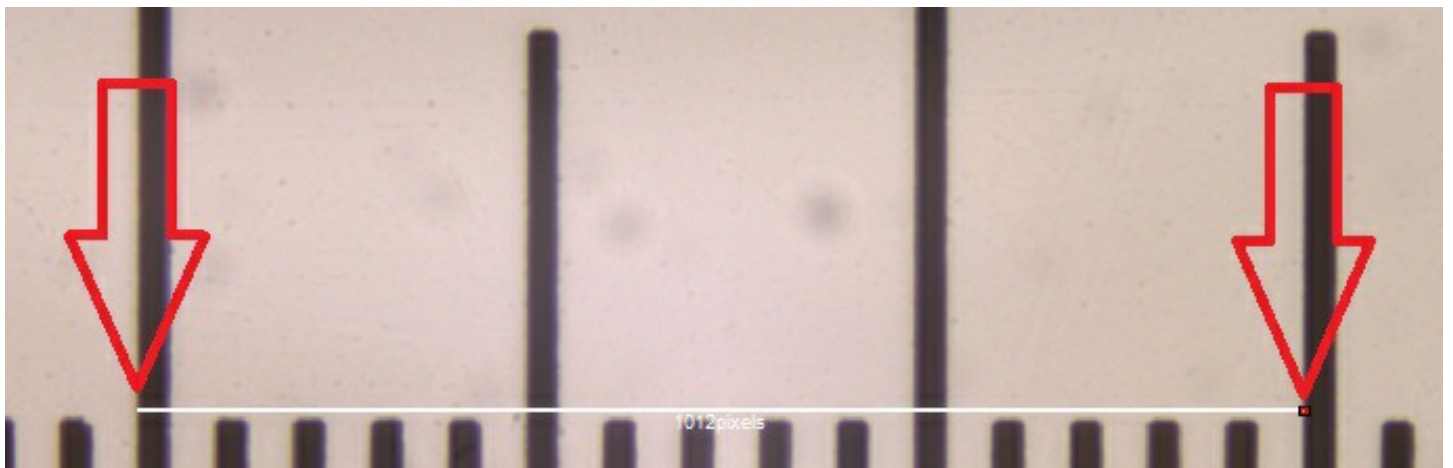
If you prefer, you can perform a manual calibration on each objective. Simply focus on the dot of a known size, set the objective, set the circle diameter and press AUTO MEASURE on each objective.

For the higher magnification objectives you will need to measure a line as the circle will be too big for the field of view. In this case measure a known distance using the line scale (1 DIV = 0.01mm) where each line is 10 microns.

1. Select the objective.
2. Type in the distance you will measure.
3. Press MANUALLY MEASURE.



This will automatically select the line drawing tool. Click and hold the left mouse button at the start of your line and release at the end. This will set the microns per pixel calibration for that objective. Repeat as required.



**When finished close Cytocam to save the calibration data.**